

# 2016 Wheeler County Saturated Thickness

20' Contour Interval

## Legend

### 2016 Ogallala Saturated Thickness

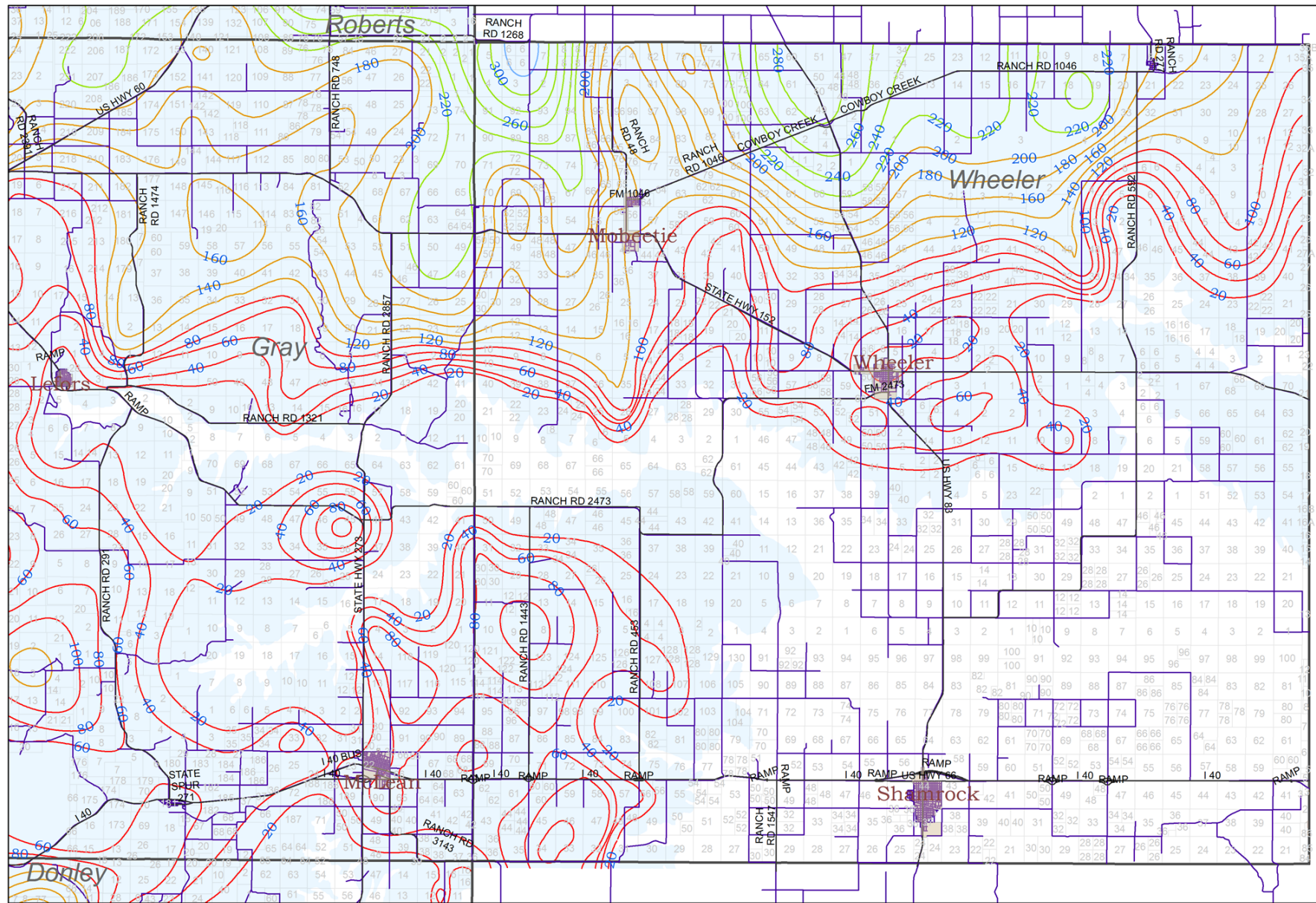
#### Contour

- 0 - 100
- 120 - 200
- 220 - 300
- 320 - 400
- 420 - 500

- Ogallala Aquifer \*
- Dockum Aquifer \*\*
- Towns
- Main Roads



well 2 mloc  
7/1/2016



\* - The extent of the Ogallala Aquifer in the Panhandle GCD is based on delineations made by the TWDB (see TWDB High Plains Aquifer GAM update 2015).

\*\* - The extent of the Dockum Aquifer in the Panhandle GCD is based on delineations made by the TWDB (see TWDB High Plains Aquifer GAM update 2015). In this area, it is now recognized that the Ogallala Aquifer is often in direct physical contact with the Dockum Aquifer, due to the absence of formations that in most areas, provide the hydrologic separation between the two quivers. As such, many wells completed in this area are complete in both the Ogallala Aquifer and the Dockum Aquifer to increase well yields. As such, precise measurement of the saturated thickness of the Ogallala Aquifer is not practical with readily available monitoring data.